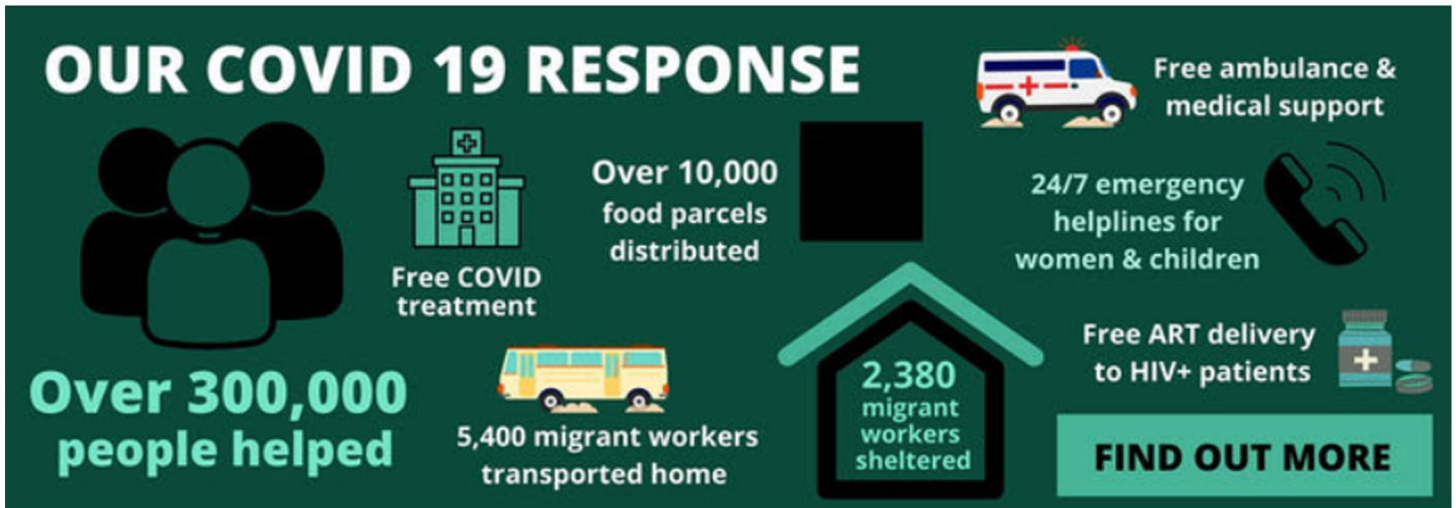




Snehalaya's COVID Response



The second wave of COVID is devastating India. Ahmednagar District, where Snehalaya operates is one of the worst hit with no beds, oxygen or medicines available to our largely rural population of nearly 5 million. High unemployment, a severe lack of statutory healthcare, drought, poverty and a large transient population has historically perpetuated many issues for low-income families, most of whom earn their living from agriculture, daily wage or migrant work.

Since March 2021 a flood of positive cases has rendered the current medical facilities throughout the district overburdened and insufficient. There has been a steep rise in the number of Corona positive patients in the district and at the start of April, Times of India reported it was in the top ten worst affected districts in India with over 1,000 new cases a day and this has now risen to around 3,000 new cases each day.

In response, we have expanded our current support with new initiatives and projects to help those from the most vulnerable situations to ensure they have equal access to health support and are not left vulnerable to opportunists.

We wouldn't be able to do any of this without you, thank you.